



802.11g

WIRELESS

IEEE 802.11g Wireless Series

Rev. C



About This Guide

This Quick Installation Guide only provides you some basic instructions. For more detailed information, please refer to the User Manual.

Before you begin, you must have at least the following:

- A Desktop pc with an available PCI slot.
- At least a 300MHz processor and 32MB of memory.
- PCI controller properly installed and working in the computer.
- An 802.11g or 802.11b Access Point (for infrastructure Mode) or another 802.11g or 802.11b wireless adapter(for Ad-Hoc; Peer-to-Peer networking mode.)



Install Driver and Utility

- Before insert PCI LAN Adapter into the PCI or slot of your computer, please install the Driver first. Make sure that the 802.11g wireless PCI LAN Adapter is NOT inserted into the PCI slot.
- Turn on the computer. Insert the CD into the CD-ROM Drive. Please browse "Cardbus_PCI Wireless Lan Adapter" click the "setup.exe". Then display "choose Setup Language" click "OK"

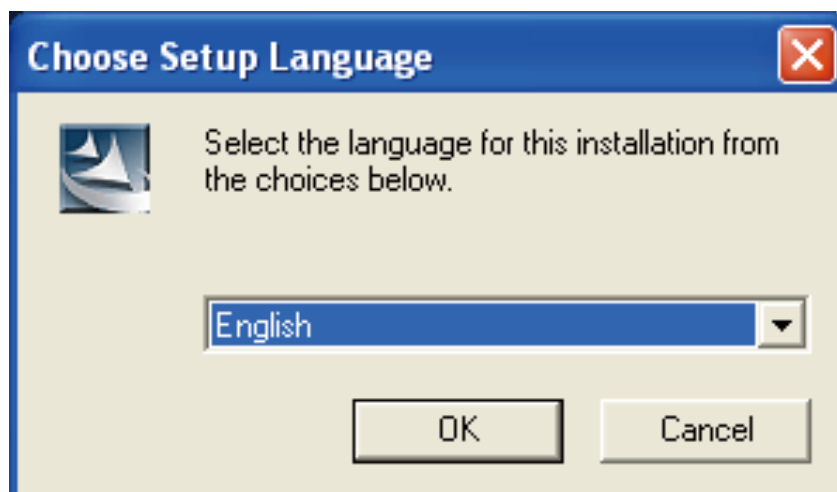


Figure 2-1

- Then installshield wizard will display. Click “next” InstallShield Wizard will automatically start.



Figure 2-2

- Please click “Continue Anyway”.



Figure 2-3

- Please click Finish then turn off your computer.



Figure 2-4



Install Wireless adapter

PCI Adapter

- Open your PC case and locate an available PCI slot on the motherboard.
- Slide the PCI Adapter into the PCI slot. Make sure that all of its pins are touching the slot's contacts. You may have to apply a bit of pressure to slide the adapter all the way in. After the adapter is firmly in place, secure its fastening tab to your PC's chassis with a mounting screw. Then close your PC.
- Attach the external antenna to the adapter's antenna port.

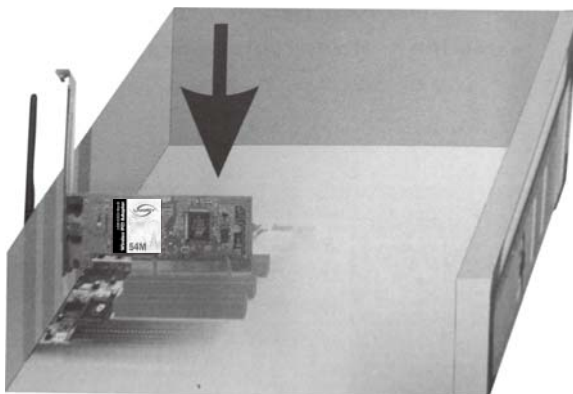


Figure 3-1

- Turn on the computer, system will prompt found new hardware wizard, select “yes, now and every time I connect a device” click next.



Figure 3-2

- Click “continue anyway” .



Figure 3-3

- Click finish.



Figure 3-4



Configuration your wireless adapter

Click “start—all programs—802.11 wireless LAN Driver and utility”
Click 802.11 Wireless LAN Utility. Click Available Network, you can find AP around yours. For example: “test o6”. Double click, then you can join it.

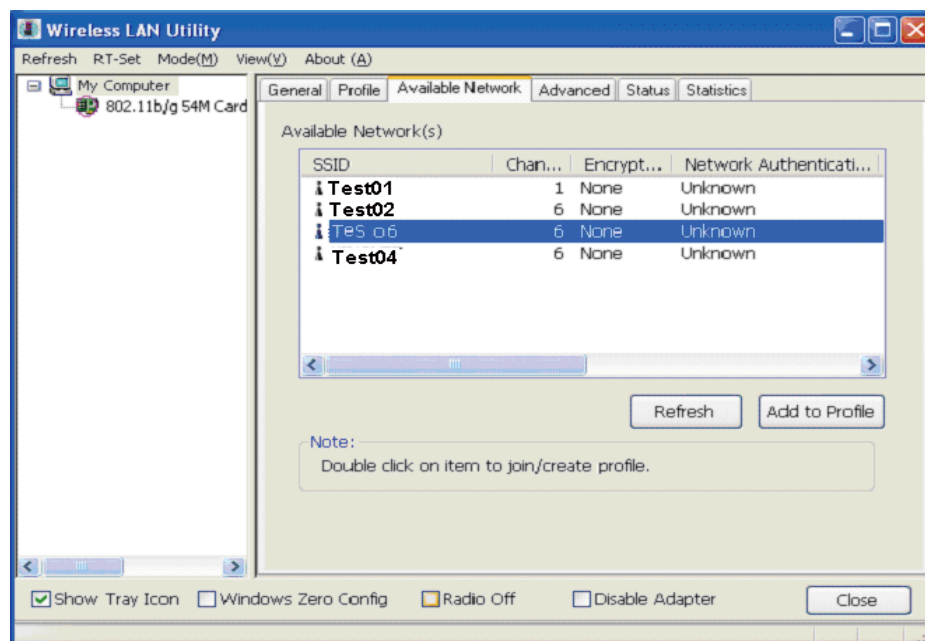


Figure 4-1

- When you do find a screen like the one below will pop up. Click OK.

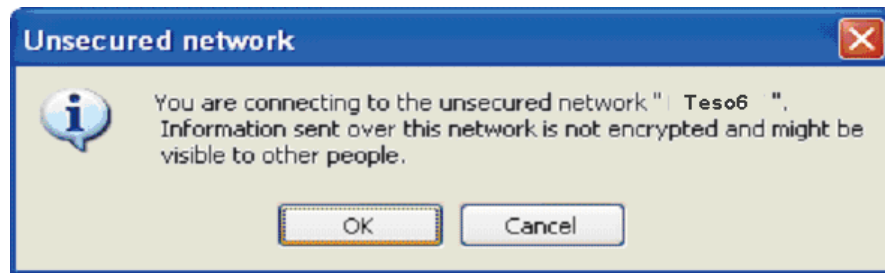


Figure 4-2

Click OK.



TECHNICAL SUPPORT

E-mail: btitech@linkskey.com

Website: www.linkskey.com